

## *Alerting and Warning*

### SITUATION

Weather emergencies, weather will be monitored by the National Weather Service located in Gray, Maine. Should the need arise automated weather forecasts will be issued by the NWS in Gray via the METRO Teletype system to all law enforcement agencies in the state of Maine. If the emergency is large enough, the Nationals and State of Maine will issue warnings and updates through the Emergency Broadcast System alerting the citizenry of the event and or actions required by them. If the event effects York County, then the Rave Alert System will be used to notify York County citizens.

The local warning point is the York Communication Center. It is responsible for alerting **elected officials** and municipal departments. It is also responsible for alerting special care facilities (boarding homes, medical facilities and schools), individuals with functional needs, the hearing impaired, non-English speaking groups and the public via warning devices and mobile notification. The York School System York Hospital, all assisted living establishments and group homes, York Water District, Kittery Water District, and York Sewer District have warning procedures and plans for their facilities.

### CONCEPT OF OPERATIONS

The Emergency Broadcast System is activated according to the Maine Emergency Broadcast System Plan. The **EMA Director** may contact the **County EMA Director** to activate that system as well as the Rave Emergency System. Town of York may contact radio station(s), local access cable, website, or TV stations directly. Warning is disseminated through appropriate available systems and technology, including Code Red at the local level.

### ORGANIZATION AND ASSIGNMENT OF RESPONSIBILITIES

Responsibilities of local government: ensure that alerting and warning capabilities exist, appropriate warning devices are activated, and special needs populations are notified.

Assignments are shown on the chart following this section.

ADMINISTRATION AND LOGISTICS

A. Policies

The **EMA Director** in conjunction with **elected officials** and **emergency service chiefs** develops guidelines for alerting personnel and special care facilities, and warning the public.

B. Reporting

The **dispatcher** makes verbal and written reports of alert notifications received, actions taken, and times of completion. These reports are recorded using IMC to create incident and note actions in narrative and given to the supervisor and the **EMA Director**.

**Alerting and Warning Task Assignment Chart**

AGENCY	Develop Annex	Maintain Alert List	Alert Key Gov. Officials & Special Facilities	Alert Staff	Relay Fan-out Warning	Public Warning
Elected Officials / Manager	S	P	S	P	S	S
Emergency Management	P	P	S	P	S	S
Law Enforcement	S	P	S	P	S	P
Fire Department	S	P	S	P	S	P
Emergency Medical/Rescue	S	P	S	P	S	S
Health & Welfare	S	P	S	P	S	S
Public Works	S	P	S	P	S	S
School Department	S	P	S	P	S	S
Harbor Master	S	P	S	P	S	S
Warning Point Dispatcher	S	S	P	P	P	P

P = Primary Responsibilities

S = Support Responsibilities

**Alerting and Warning Points**

Primary Warning Points:

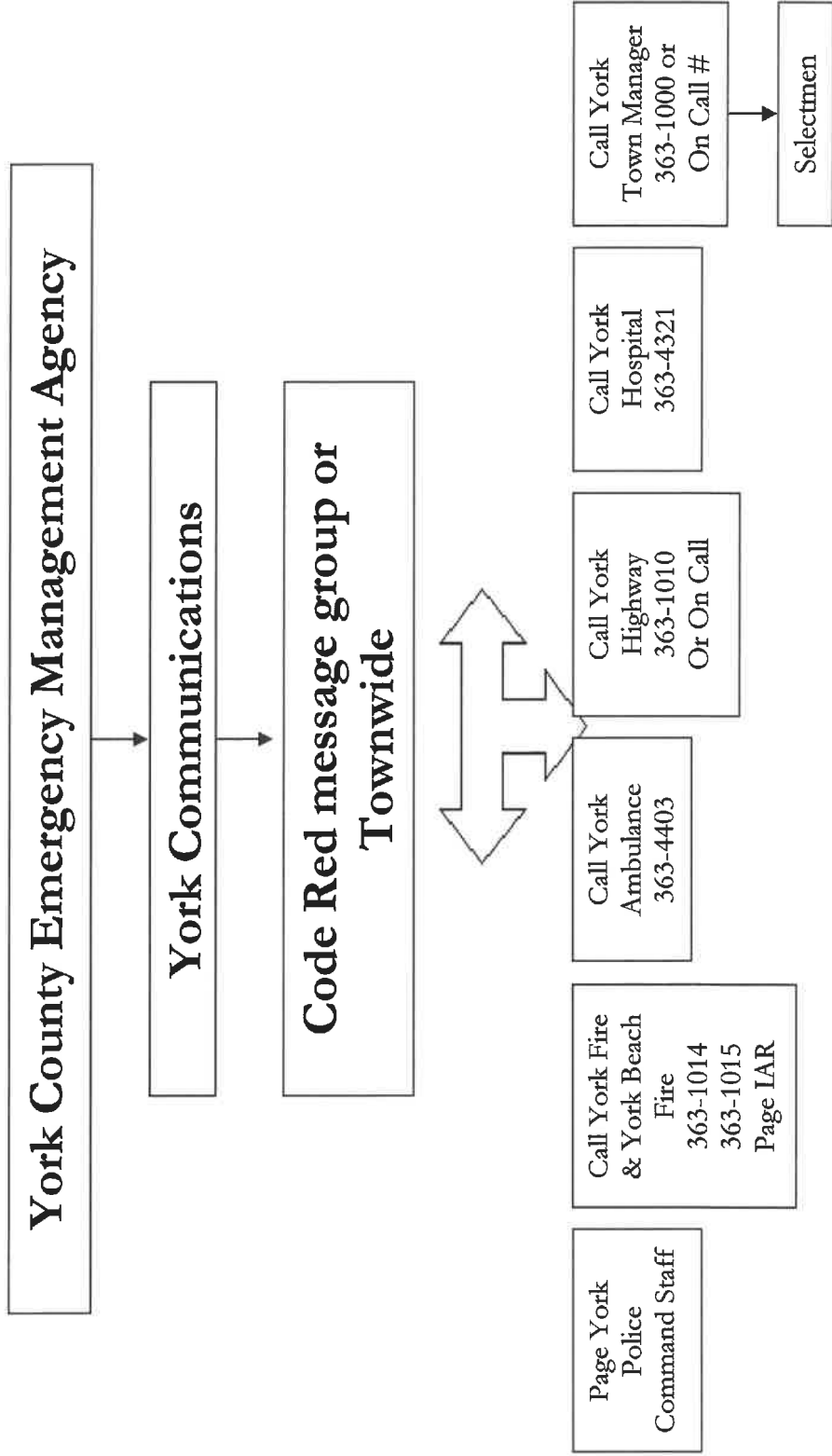
State: Maine Emergency Management Agency  
(800) 452-8735 (207) 624-4400

County: Sanford Regional Communications Center  
(207) 324-1111 (after hours)

York County Emergency Management Director  
(207) 459-2451

Town: Town of York Communications Center  
(207) 363-4444 Emergency # 911

**Alerting and Warning  
Municipal Fan-out Chart Fan-out Call List**



## Alerting and Warning Radio Frequencies

Alpha Tag	RX	RX Tone	TX	TX Tone	Description
<b>ZONE 1 PRIMARY</b>					
York PD	154.8525	107.2	159.0375	167.9	York Police Primary
Statewide C to C	154.6950	CSQ	154.6950	CSQ	Statewide C to C CONOPS 6
MSCOMMNET	159.4500	162.2	153.9200	162.2	York Tower
York Town Govt.	153.9350	192.8	155.8050	192.8	York Town Government
York PD Tac 1	153.8525	192.8	155.8525	192.8	York Police Tactical Ch. 1
York Tac Repeater	155.6400	100	159.2100	100	Town Tactical
York FD	154.2650	97.4	158.8800	173.8	York FD Primary
Turnpike Link	160.7700	123.0	156.0600	123.0	Turnpike
MSCOMMNET	155.4525	162.2	156.1500	162.2	Agamenticus Tower
Kittery PD	155.1150	192.8	151.2425	192.8	Police
Ogunquit PD	160.0050	103.5	155.0400	103.5	Police
Wells PD	155.1000	192.8	159.7650	162.2	Police
S. Berwick PD	155.8350	192.8	158.7750	210.7	Police
Berwick PD	153.9800	85.4	158.7750	85.4	Police
N. Berwick PD	159.0900	127.3	155.9175	127.3	Police
Nationwide C to C	155.4750	CSQ	155.4750	CSQ	VLAW 31 CONOPS 2
<b>ZONE 2 Police Departments</b>					
York PD	154.8525	107.2	159.0375	167.9	York Police Primary
Kittery PD	155.1150	192.8	151.2425	192.8	Police
Ogunquit PD	160.0050	103.5	155.0400	103.5	Police
Wells PD	155.1000	192.8	159.7650	162.2	Police
S. Berwick PD	155.8350	192.8	158.7750	85.4	Police
Berwick PD	155.8350	192.8	158.7750	85.4	Police
N. Berwick PD	159.0900	127.3	155.9175	127.3	Police
Kennebunk PD	155.7300	192.8	154.1150	146.2	Police
Kennebunkport PD	155.1900	131.8	158.8950	131.8	Police
Biddeford PD	159.9450	192.8	154.9275	192.8	Police
Saco PD	160.0500	167.9	155.0550	167.9	Police
OOB PD	155.0100	192.8	156.0375	110.9	Police
Buxton PD	159.9450	192.8	154.9275	192.8	Police
Sanford PD	155.3100	100	159.7500	192.8	Police
YCSO	154.9950	192.8	158.5800	156.7	Police
Statewide C to C	154.6950	CSQ	154.6950	CSQ	Police
Nationwide C to C	155.4750	CSQ	155.4750	CSQ	VLAW 31 CONOPS 2
CCSO	151.1075	107.2	155.8650	107.2	Police

Alpha Tag	RX	RX Tone	TX	TX Tone	Description
<b>ZONE 3 Town 911</b>					
York PD	154.8525	107.2	159.0375	167.9	York Police Primary
York FD	154.2650	97.4	158.8800	173.8	York Fire Primary
Tac Repeater	155.6400	100	159.2100	100	Town Tactical
York Town Government	153.9350	192.8	155.8050	192.8	York Town Government
York PD Tac 1	153.8525	192.8	155.8525	192.8	York PD Tactical Ch. 1
York Fireground	153.8375	173.8	153.8375	173.8	York Fireground
York Beach FD Tac	154.2425	173.8	154.2425	173.8	YBFD Tac
York Village FD Tac	154.1675	173.8	154.1675	173.8	YVFD Tac
Fire Apparatus	154.0175	173.8	154.0175	173.8	York FD Apparatus Ops
York Ambulance	155.2350	103.5	155.2350	103.5	York Ambulance
York Hospital	155.3250	CSQ	155.3250	103.5	York Hospital
EMS Tac	155.2350	CSQ	155.2350	192.8	EMS Tac
State Fire	154.3100	CSQ	154.3100	CSQ	Maine State Fire CONOPS 5
Search & Rescue	156.1000	CSQ	156.1000	192.8	SAR
York County EMA	159.7800	156.7	159.7800	156.7	York County EMA
York Bus	155.1600	91.5	155.1600	91.5	York Bus
<b>ZONE 4 Water 911</b>					
York PD	154.8525	107.2	159.0375	167.9	York Police Primary
York FD	154.2650	97.4	158.8800	173.8	York Fire Primary
York Town Government	153.9350	192.8	155.8050	192.8	York Town Government
York Fireground	153.8375	173.8	153.8375	173.8	York Fireground
York FD Channel 5	158.8800	118.8	158.8800	118.8	York Fire Channel 5
Lifeguard	155.2800	CSQ	155.2800	192.8	Lifeguard
USCG Channel 6	156.3000	CSQ	156.3000	CSQ	USCG
USCG Channel 9	156.4500	CSQ	156.4500	CSQ	USCG
USCG Channel 16	156.8000	CSQ	156.8000	CSQ	USCG
USCG Channel 17	156.8500	CSQ	156.8500	CSQ	USCG
USCG Channel 22A	157.1000	CSQ	157.1000	CSQ	USCG
USCG Channel 23	157.1500	CSQ	157.1500	CSQ	USCG
USCG Channel 77	156.8750	CSQ	156.8750	CSQ	USCG

Alpha Tag	RX	RX Tone	TX	TX Tone	Description
<b>ZONE 5 CONOPS</b>					
York PD	154.8525	107.2	159.0375	167.9	York Police Primary
CONOPS Channel 1	154.7100	CSQ	154.7100	CSQ	Statewide SP
CONOPS Channel 2	155.4750	CSQ	155.4750	CSQ	Nationwide VLAW 31
CONOPS Channel 3	155.1600	CSQ	155.1600	CSQ	EMS/LASER SAR NFM
CONOPS Channel 4	154.9350	CSQ	154.9350	CSQ	State Police C to C
CONOPS Channel 5	154.3100	CSQ	154.3100	CSQ	Maine State Fire
CONOPS Channel 6	154.6950	CSQ	154.6950	CSQ	Statewide C to C
VCALL 10	155.7525	CSQ	155.7525	156.7	N.E. Interoperability
VTAC 11	151.1375	CSQ	151.1375	156.7	N.E. Interoperability
VTAC 12	154.4525	CSQ	154.4525	156.7	N.E. Interoperability
VTAC 13	158.7375	CSQ	158.7375	156.7	N.E. Interoperability
VTAC 14	159.4725	CSQ	159.4725	156.7	N.E. Interoperability
York County EMA	159.7800	156.7	159.7800	156.7	York County EMA
<b>ZONE 6 SCHOOL 911</b>					
York PD	154.8525	107.2	159.0375	167.9	York Police Primary
York PD Tac 1	153.8525	192.8	155.8525	192.8	York PD Tactical Ch. 1
Tac Repeater	155.6400	100	159.2100	100	Town Wide Tactical
YCSO Tac 6	160.4100	156.7	153.7850	156.7	YCSO Tactical Channel 6
YCSO Tac 8	155.1600	192.8	155.1600	192.8	YCSO Tactical Channel 8
Sanford PD Tac 6	158.9850	192.8	158.9850	192.8	Sanford PD Tac. Channel 6
School/Lifeguard	155.2800	192.8	155.2800	192.8	Lifeguard
Bus	155.1600	91.5	155.1600	91.5	Bus
VES	152.9900	192.8	160.0655	192.8	Village Elementary
CRES	151.9850	192.8	158.3400	192.8	Coastal Ridge Elementary
YMS	153.1625	192.8	159.7950	192.8	York Middle
YHS	153.1550	192.8	159.9150	192.8	York High
<b>ZONE 7 NH POLICE</b>					
Dover PD	154.6800	136.5	154.6800	136.5	Police
NHSP Troop A	151.4000	CSQ	159.2550	CSQ	Police
Portsmouth PD	154.7400	CSQ	154.7400	CSQ	Police
Rochester PD	159.4050	CSQ	154.8900	CSQ	Police
Somersworth PD	155.8800	CSQ	155.8800	136.5	Police
Strafford County SO	154.7250	CSQ	155.5950	CSQ	Police

## Alerting and Warning Checklist

- Receive Notification.  
From: \_\_\_\_\_
- Complete fan-out according to SOP.
- If limited warning time, the following actions may be undertaken by the law enforcement and fire personnel:
  - a. Fixed warning devices are activated.
  - b. Mobile notification routes are followed with public address system or door to door notification.
  - c. Web, social media, community notification system by phone/text.
  - d. Warning notification to special needs facilities. See list of special needs facilities in file.
  - e. Notification to hospitals, clinics and nursing/special care facilities.
- Other public warning is used as available and as time permits.
  - a. Radio announcements.
  - b. Television announcement.
  - c. Code Red community notification system.
  - d. Web.
  - e. Social media.
- Keep signed logs of emergency communication traffic.

Also see the Emergency Information and Education Section.