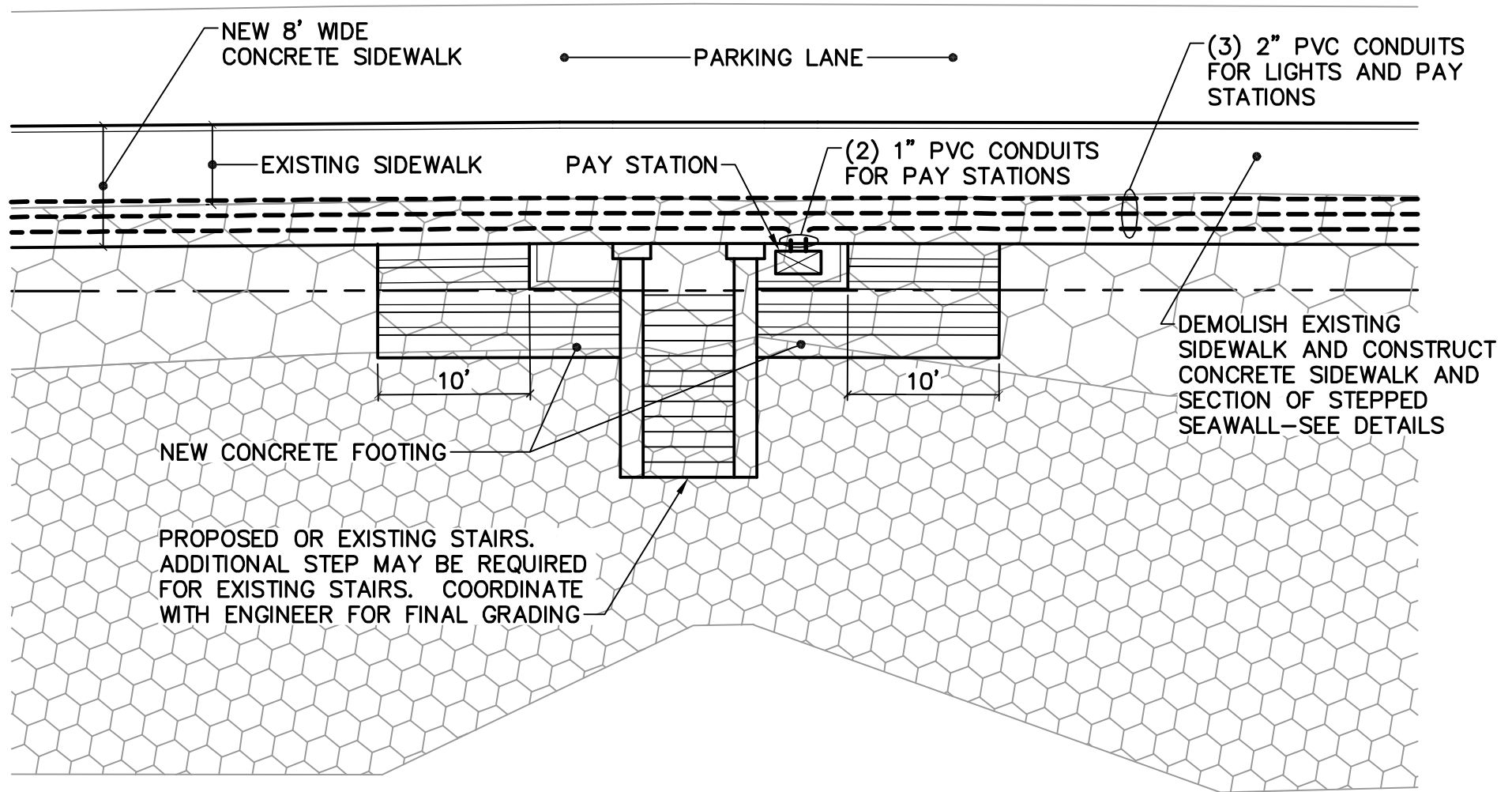
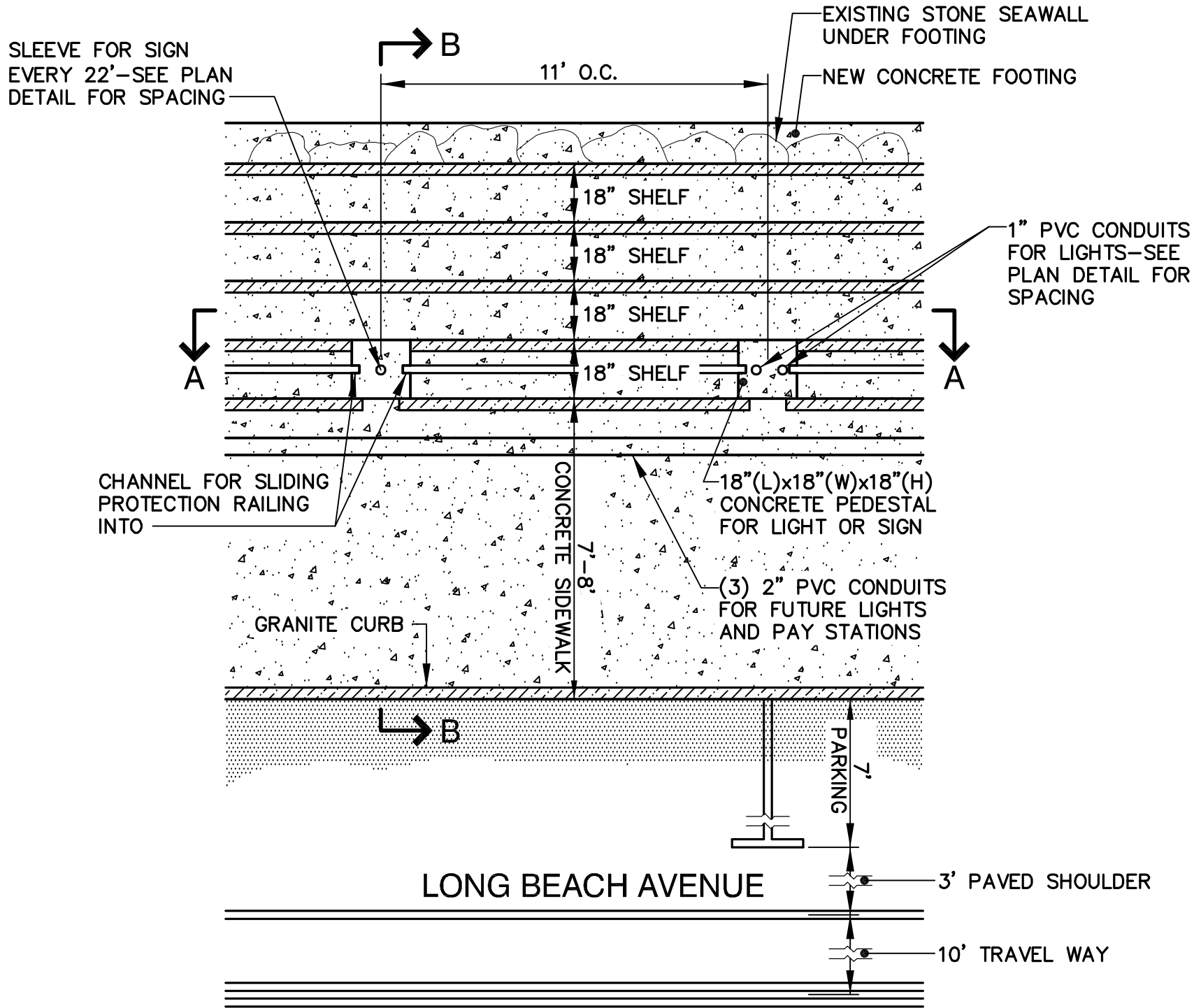


SECTION A-A
NOT TO SCALE



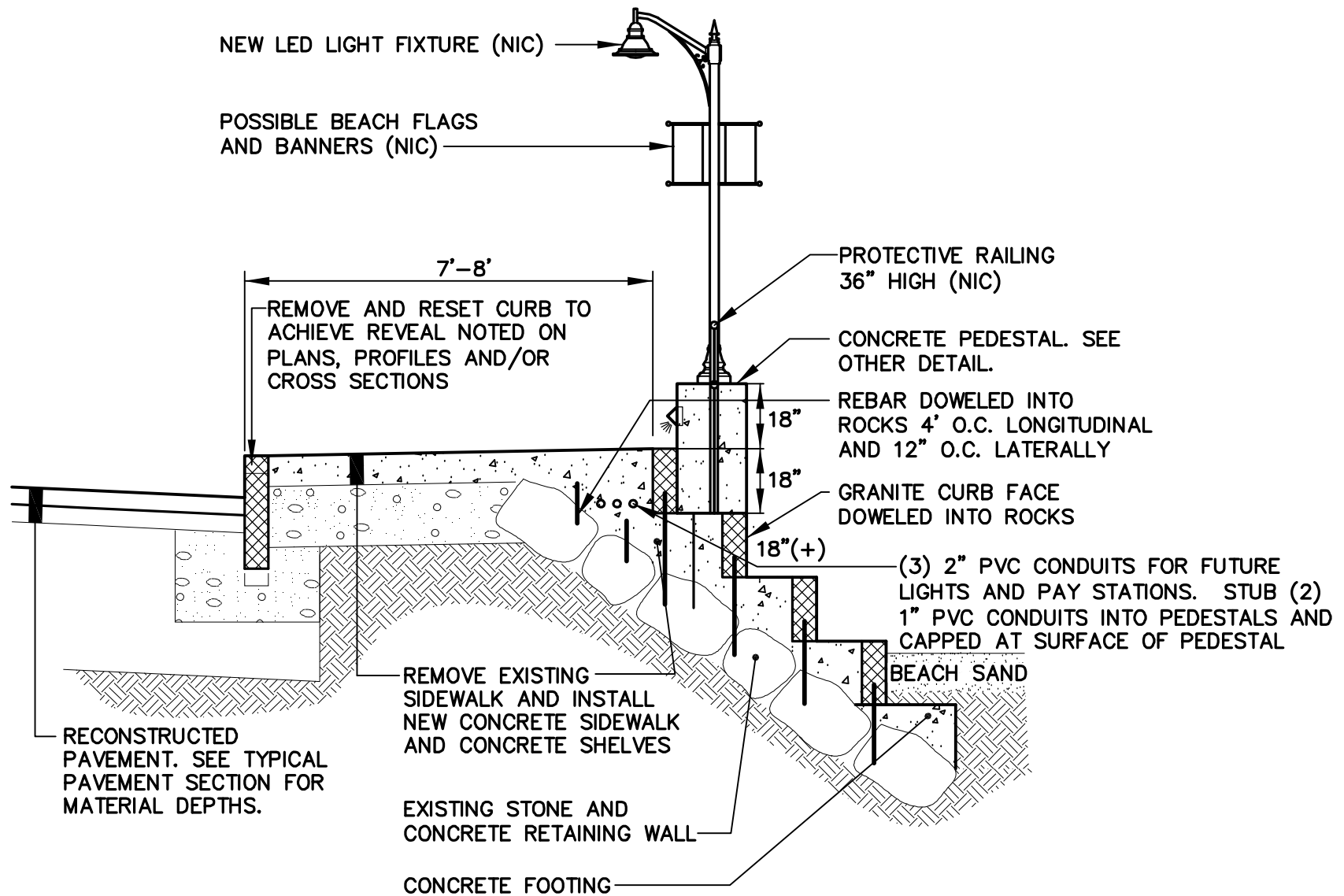
TYPICAL SHORT-TERM SIDEWALK EXPANSION AND STEPPED SEAWALL

NOT TO SCALE



SIDE WALK DETAIL

NOT TO SCALE

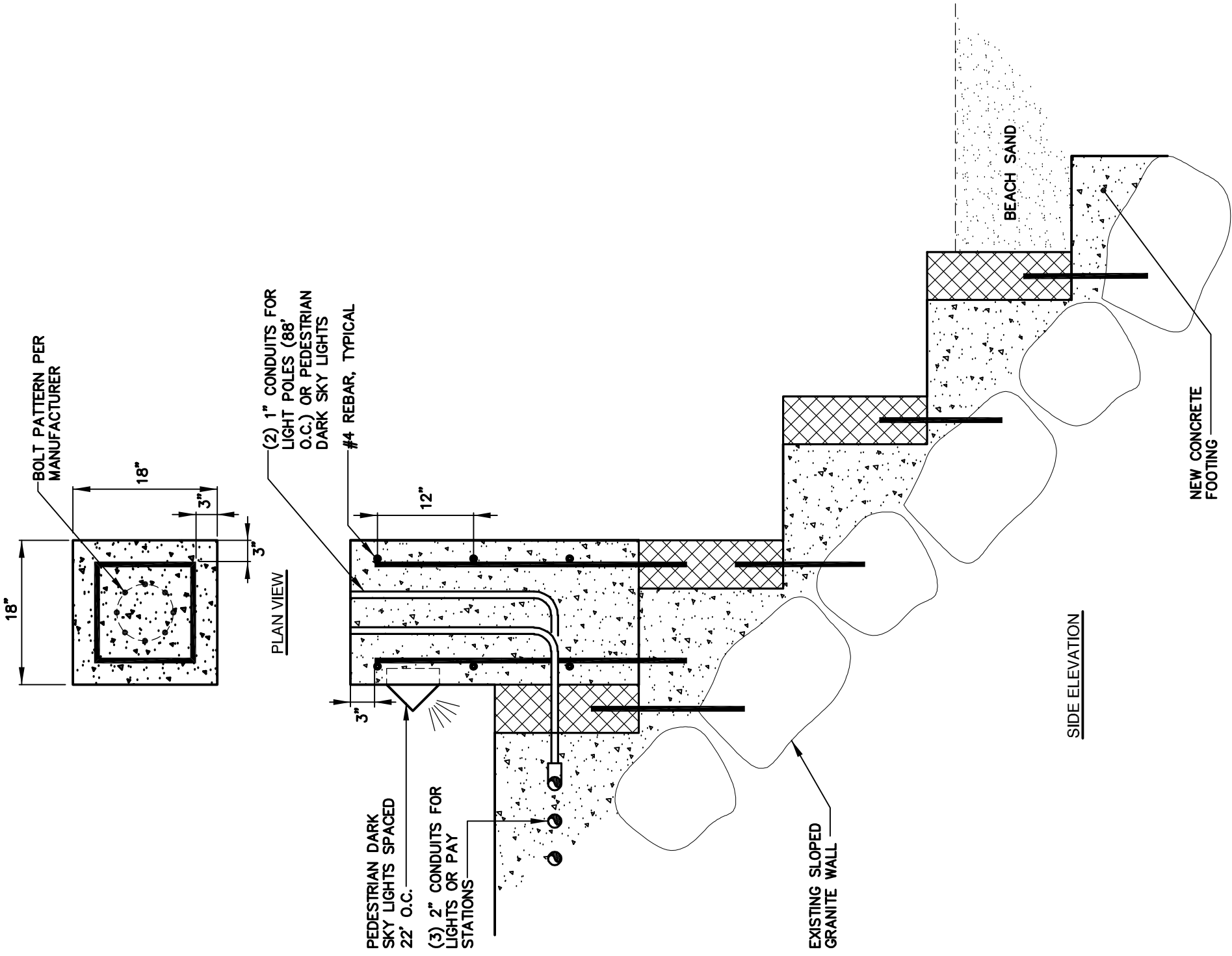


NOTE

1. CONTRACTOR SHALL CONSULT WITH DPW AND DESIGN ENGINEER FOR THE EXACT LOCATIONS OF PEDESTALS IN NEW STEPPED SEAWALL. THE CONTRACTOR SHALL BE RESPONSIBLE FOR THE CONSTRUCTION OF THE STEPPED SEAWALL, PEDESTALS, SLEEVES AND CONDUIT WITHIN THE LIMITS OF WORK. THE CONTRACTOR SHALL PLACE TWO 1" PVC CONDUITS WITHIN CONCRETE SIDEWALK WITH BRANCH SERVICES AT EACH PEDESTAL. THE CONTRACTOR IS NOT RESPONSIBLE FOR LIGHT POLES, FIXTURES, BANNERS, FENCES OR CONDUCTORS

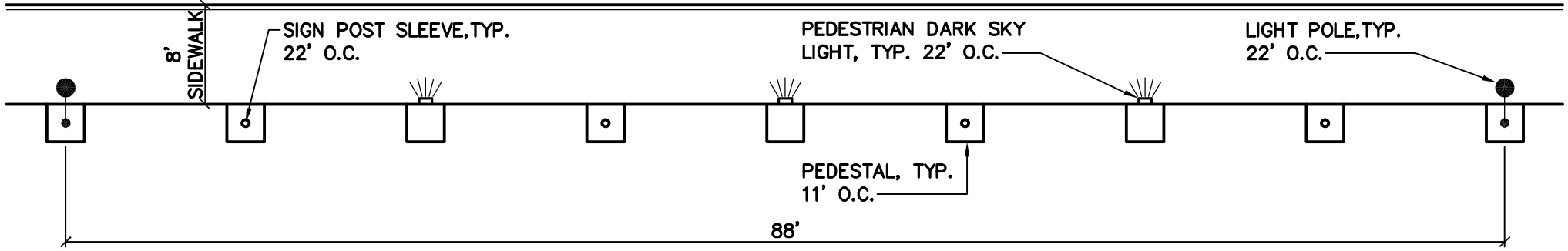
SECTION B-B

NOT TO SCALE



CONCRETE PEDESTAL DETAIL

NOT TO SCALE



LIGHTING PLAN

NOT TO SCALE