

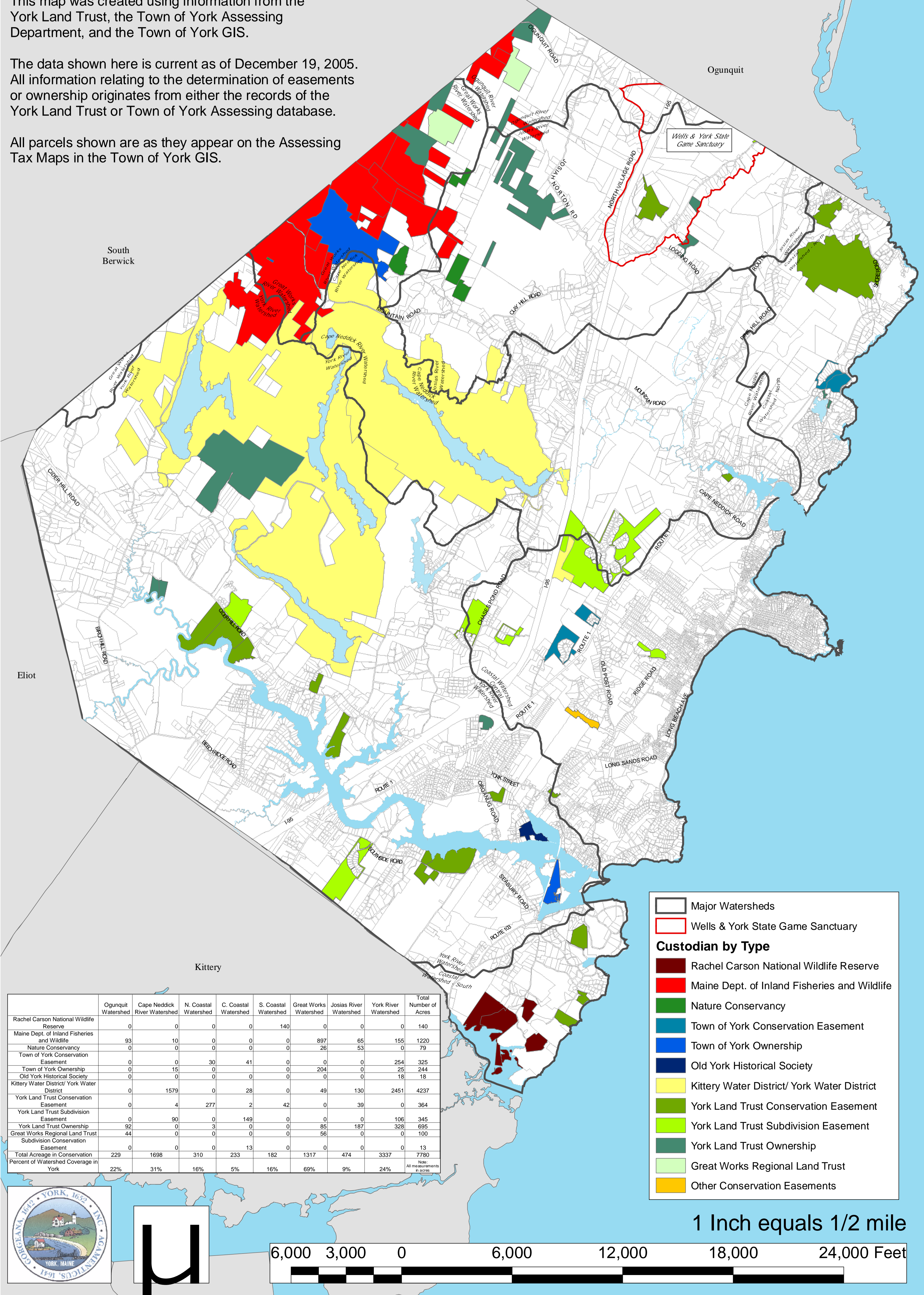
# Conservation Lands

## York Comprehensive Plan Inventory and Analysis Natural Resources February 10, 2006

This map was created using information from the York Land Trust, the Town of York Assessing Department, and the Town of York GIS.

The data shown here is current as of December 19, 2005. All information relating to the determination of easements or ownership originates from either the records of the York Land Trust or Town of York Assessing database.

All parcels shown are as they appear on the Assessing Tax Maps in the Town of York GIS.



Major Watersheds  
 Wells & York State Game Sanctuary  
**Custodian by Type**  
 Rachel Carson National Wildlife Reserve  
 Maine Dept. of Inland Fisheries and Wildlife  
 Nature Conservancy  
 Town of York Conservation Easement  
 Town of York Ownership  
 Old York Historical Society  
 Kittery Water District/ York Water District  
 York Land Trust Conservation Easement  
 York Land Trust Subdivision Easement  
 York Land Trust Ownership  
 Great Works Regional Land Trust  
 Other Conservation Easements

	Ogunquit Watershed	Cape Neddick River Watershed	N. Coastal Watershed	C. Coastal Watershed	S. Coastal Watershed	Great Works Watershed	Josias River Watershed	York River Watershed	Total Number of Acres
Rachel Carson National Wildlife Reserve	0	0	0	0	140	0	0	0	140
Maine Dept. of Inland Fisheries and Wildlife	93	10	0	0	0	897	65	155	1220
Nature Conservancy	0	0	0	0	0	26	53	0	79
Town of York Conservation Easement	0	0	30	41	0	0	0	254	325
Town of York Ownership	0	15	0	0	0	204	0	25	244
Old York Historical Society	0	0	0	0	0	0	0	18	18
Kittery Water District/ York Water District	0	1579	0	28	0	49	130	2451	4237
York Land Trust Conservation Easement	0	4	277	2	42	0	39	0	364
York Land Trust Subdivision Easement	0	90	0	149	0	0	0	106	345
York Land Trust Ownership	92	0	3	0	0	85	187	328	695
Great Works Regional Land Trust Subdivision Conservation Easement	44	0	0	0	0	56	0	0	100
York Land Trust Ownership	0	0	0	0	13	0	0	0	13
<b>Total Acreage in Conservation</b>	<b>229</b>	<b>1698</b>	<b>310</b>	<b>233</b>	<b>182</b>	<b>1317</b>	<b>474</b>	<b>3337</b>	<b>7780</b>
<b>Percent of Watershed Coverage in York</b>	<b>22%</b>	<b>31%</b>	<b>16%</b>	<b>5%</b>	<b>16%</b>	<b>69%</b>	<b>9%</b>	<b>24%</b>	

1 Inch equals 1/2 mile

