



## FURNITURE SPECIFICATIONS

## STORAGE

### F-1 3-drawer lateral file

Quantity: 12

Location: see plan

Unit price: \_\_\_\_\_ „Extended price:

MANUFACTURER: Herman Miller or Architect approved equal

DESCRIPTION: 3-drawer lateral file, 30" w x 19"d x 40

### F1 -A Common laminate top

Quantity: 3

Location: see plan

Unit price:

Extended price:

MANUFACTURER: Herman Miller or Architect approved equal

DESCRIPTION: Common laminate top for 3-drawer files. 90"x19" to match desk tops

**F-2 2-drawer lateral file**

Quantity: 10

Location: see plan

Unit price:

Extended price:

MANUFACTURER: Herman Miller or Architect approved equal

DESCRIPTION: 2-drawer lateral file. 30"w x 28"h x 19"d,

## STORAGE

### F-3 5-drawer vertical file

Quantity: 37

Location: see plan

Unit price:

Extended price:

MANUFACTURER:

DESCRIPTION: 5-drawer vertical file. 15" w x 26.5" d x 64" h.

### F-4 lateral files and bookcases with common laminate top

Quantity: 1

Location: see plan

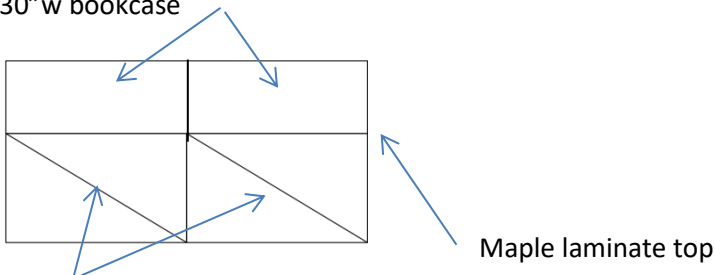
Unit price:

Extended price:

MANUFACTURER:

DESCRIPTION: 2-3 drawer lateral file + 2 30" w x 12" d x 40" h bookcase with maple laminate top.

30" w bookcase



3-drawer lateral file

## STORAGE

### F-5 lateral files and bookcase with common laminate top

Quantity: 1

Location: see plan

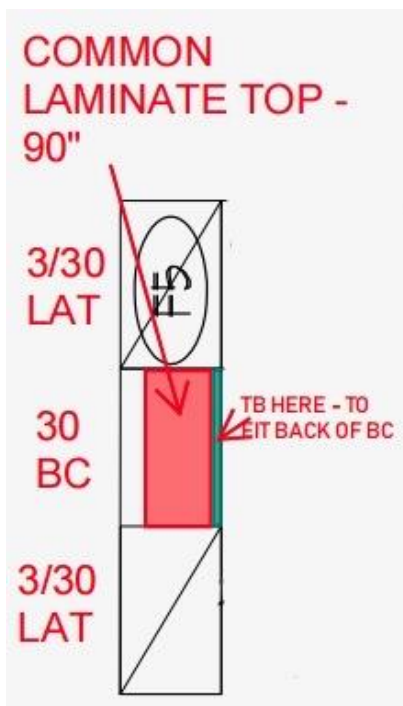
Unit price:

Extended price:

MANUFACTURER:

DESCRIPTION: 2 lateral files and bookcase with tack surface on back and laminate top

Two files 30"w x 40"h x 29"d, one bookcase 30" w x 40" h x 12"d.





## FURNITURE SPECIFICATIONS

### STORAGE

#### **F-6 box /box /file**

Quantity: 8

Location: see plan

Unit price:

Extended price:

MANUFACTURER: Herman Miller or Architect approved equal

DESCRIPTION: three drawer freestanding box box file. 24"d x 15"w x 27.75"h

#### **F-6A file/file**

Quantity: 17

Location: see plan

Unit price:

Extended price:

MANUFACTURER: Herman Miller or Architect approved equal

DESCRIPTION: work surface supporting file/file

#### **F-9 mobile file**

Quantity: 12

Location: see plan

Unit price:

Extended price:

MANUFACTURER: Herman Miller or Architect approved equal

DESCRIPTION: Mobile box/file with cushion top - 20" deep, full extension drawer slides with 1" cushion top, locking, grade 1 fabric.



## FURNITURE SPECIFICATIONS

### STORAGE

#### **B-1 laminate bookcase**

Quantity: 2

Location: see plan

Unit price:

Extended price:

MANUFACTURER: Herman Miller or Architect approved equal

DESCRIPTION: bookcase 42" w x 12" d x 72" h

#### **B-5 wall mounted laminate bookcase**

Quantity: 1

Location: see plan

Unit price:

Extended price:

MANUFACTURER: Herman Miller or Architect approved equal

DESCRIPTION: bookcase 42" w x 12" d x 30" h. To be wall mounted. Height to be verified in the field



## FURNITURE SPECIFICATIONS

### STORAGE

SS3

Quantity:

Location: see plan

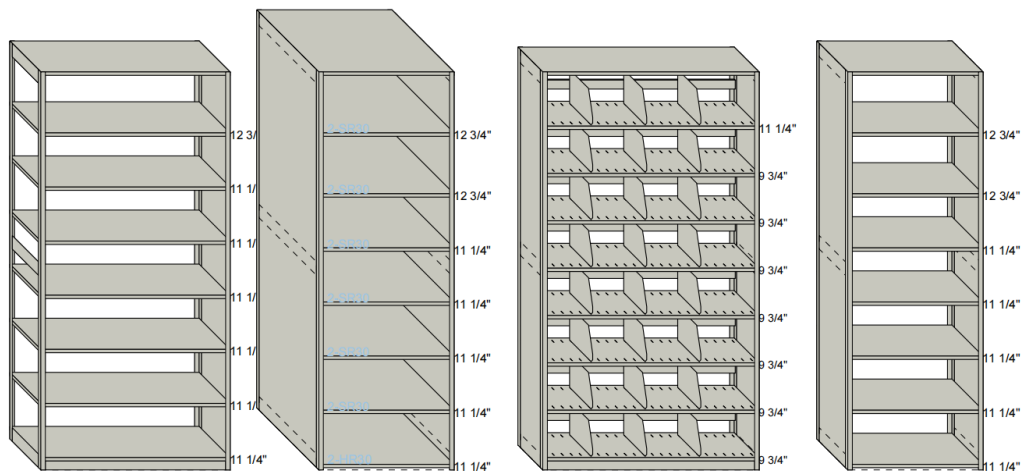
Unit price:

Extended price:

DESCRIPTION: moveable system shelving

MANUFACTURER:



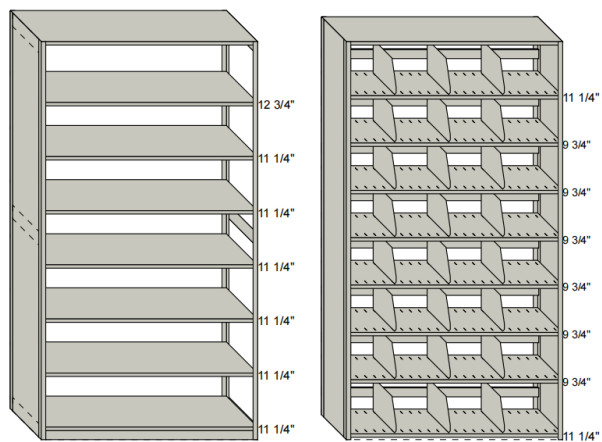


**R1**  
42"W x 15"D  
H=88 1/4"

**R2**  
30"W x 30"D  
H=88 1/4"  
SysH=93 1/2"

**R3**  
48"W x 12"D  
H=88 1/4"

**R6**  
30"W x 15"D  
H=88 1/4"  
SysH=93 1/2"



**R7**  
48"W x 15"D  
H=88 1/4"

**R10**  
48"W x 12"D  
H=88 1/4"  
SysH=93 3/4"



## TABLES

### T-1 plan table

Quantity: 7

Location: see plan

Unit price:

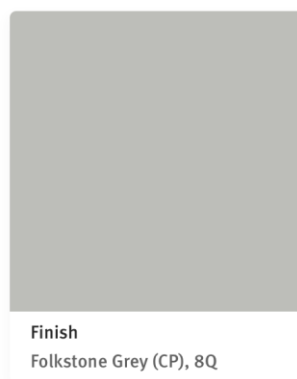
Extended price:

MANUFACTURER: Herman Miller or approved equal

DESCRIPTION: Everywhere table 30"x 48". Maple laminate top, post leg, folkstone grey finish. Carpet glides



Maple



Finish  
Folkstone Grey (CP), 8Q

## TABLES

### T-2 conference table

Quantity: 1

Location: see plan

Unit price:

Extended price:

MANUFACTURER: Herman Miller

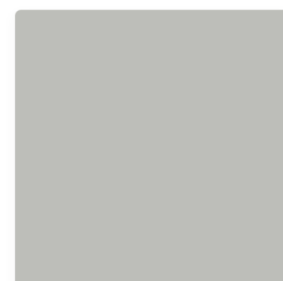
DESCRIPTION: Everywhere tables 144" x 42" single column, 3 base supports, maple top, folkstone grey leg finish, with carpet glides. Bases to have wire holes.

Two grommets will be placed at either end of the table. Cords will be managed via wire management to the center of the table and run down through the column base to the floor core. Floor core is located on the plan.

Each grommet to accommodate 2 outlets and 2 usb plugs and provide a space to coil up any data cables that get left on the table tops. These can be specified with 6', 9', 10' or 12' cords. We'll want to be sure to provide wire management below the top so no dangling cables are in view.



Maple



Finish  
Folkstone Grey (CP), 8Q



## TABLES

### T-3 36" round table

Quantity: 4

Location: see plan

Unit price:

Extended price:

MANUFACTURER: Herman Miller or approved equal

DESCRIPTION: Everywhere table 36" round Single column base. Bianco top, Folkstone grey legs



#### Everywhere Table-Round

Diameters: 30-60"

Heights: 16-42"



Leg finish

## TABLES

### T-4 table bases

Quantity: 4

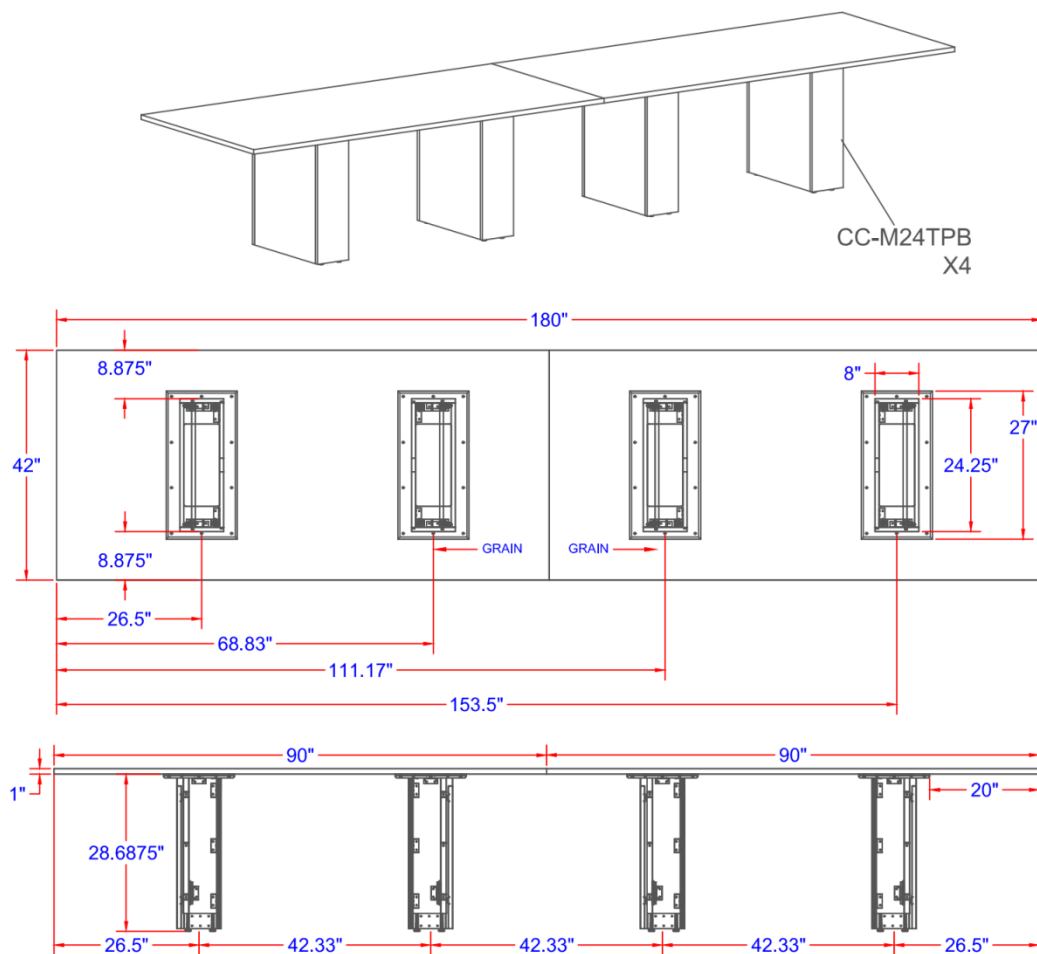
Location: see plan

Unit price:

Extended price:

DESCRIPTION: Large Conference room table bases only. Custom top and grommets by owner.

Table top is 180" x 42" in 2 pieces



## TABLES

### T-5 finance table

Quantity: 1

Location: see plan

Unit price:

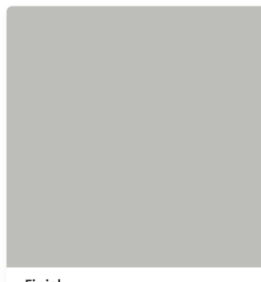
Extended price:

MANUFACTURER: Herman Miller or approved equal

DESCRIPTION: Everywhere table 30" x 60"



top Maple



leg finish

Finish  
Folkstone Grey (CP), 8Q

## TABLES

### T-6 office table

Quantity: 1

Location: see plan

Unit price:

Extended price:

MANUFACTURER: Herman Miller or approved equal

DESCRIPTION: Everywhere table 30" round



### Everywhere Table-Round

Diameters: 30-60"

Heights: 16-42"



top Maple



leg finish

Finish  
Folkstone Grey (CP), 8Q

## TABLES

### T-7 occasional table

Quantity: 1

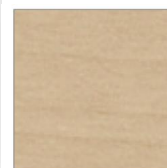
Location: see plan

Unit price:

Extended price:

MANUFACTURER: Kimball or approved equal

DESCRIPTION: Aussie round end table. 24"x24"x22" Maple finish - closest match to other mfg. Finishes.



Maple

## TABLES

### T-8 small conference room

Quantity: 1

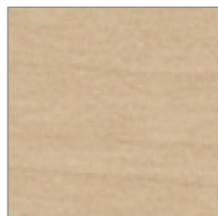
Location: see plan

Unit price:

Extended price:

MANUFACTURER: Herman Miller

DESCRIPTION: Everywhere table 36"x36". 4 column single base. Folkstone grey base, maple top



top Maple



leg finish

Finish  
Folkstone Grey (CP), 8Q



## WORK STATIONS

DESCRIPTION: Herman Miller Action Office or approved equal

COMPONENTS: Electric height adjustable laminate top table (22.6" - 48.75") with programmable up/down switch. fixed height return with work surface attached metal file/file pedestal - 24" deep, full extension drawer slides, locking. Work surface mounted Humanscale wire manager NT1SWG, hinged mesh wire manager, 39" wide with 6-outlet power strip.



Tops to be 1.125" thick, with 3mm Thermoplastic edge. Main surface to be undersized to 29x70 to provide finger pinch gap. F/F pedestal to have 1" leveling glides.

Maple top, folkstone grey legs

## WORK STATION

### D-1

Quantity: 2

Location: see plan

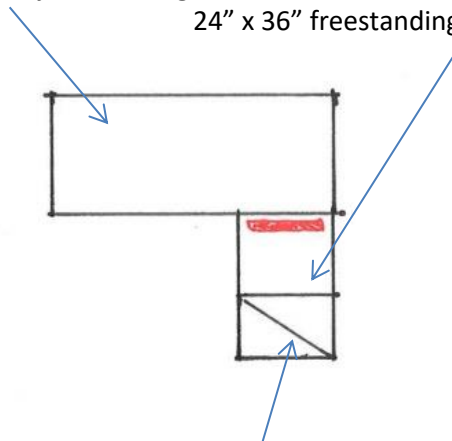
Unit price:

Extended price:

DESCRIPTION:

30"x72" adjustable height desk

24" x 36" freestanding return with C-leg



Work surface supporting file file with lock



FURNITURE SPECIFICATIONS

**WORK STATION**

**D-1A** 7 of these are existing and need to be relocated from 4 Market Place Drive, York, ME to Group code 118, Emergency 219 and Group Office 226.as part of bid.

Quantity: 4

Location: see plan

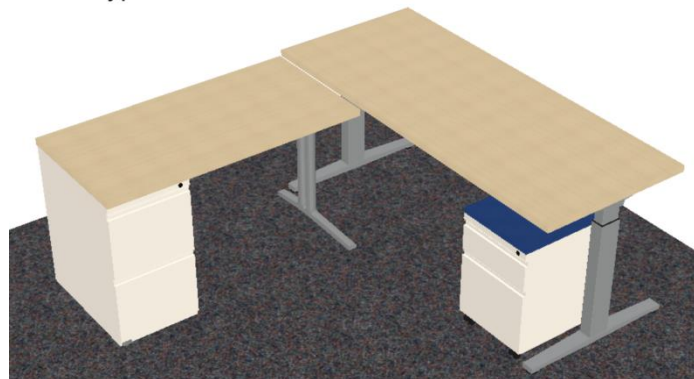
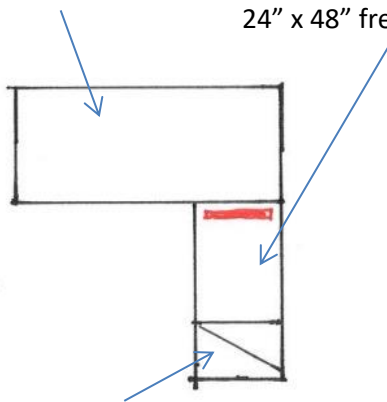
Unit price:

Extended price:

**DESCRIPTION:**

30"x72" adjustable height desk

24" x 48" freestanding return with C-leg



Work surface supporting file file with lock

**D-1B**

Quantity: 4

Location: see plan

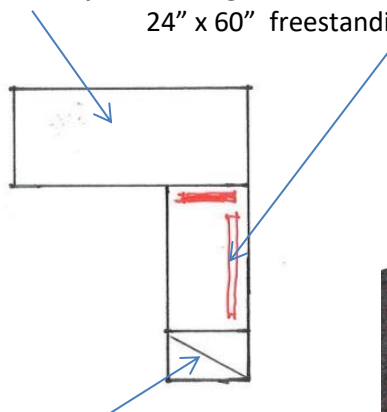
Unit price:

Extended price:

**DESCRIPTION:**

30"x72" adjustable height desk,

24" x 60" freestanding return with C-leg and stiffeners as shown to support surfaces



Work surface supporting file file with lock

## WORK STATION

### D-2

Quantity: 3

Location: see plan

Unit price:

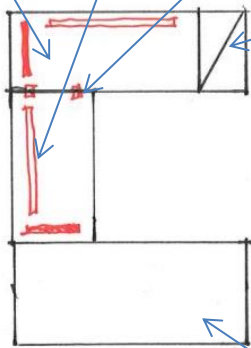
Extended price:

#### DESCRIPTION:

24" x 72" and 24"x48" freestanding return with C-leg and stiffeners as shown to support surfaces

Flat brackets to connect surfaces

Work surface supporting file file with lock



30"x72" adjustable height desk

### D-3

Quantity: 2

Location: see plan

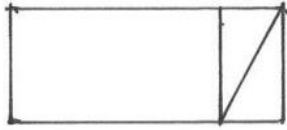
Unit price:

Extended price:

#### DESCRIPTION:

30"x72" fixed height desk

Work surface supporting file file with lock



## FURNITURE SPECIFICATIONS

### WORK STATION

#### D-4

Quantity: 2

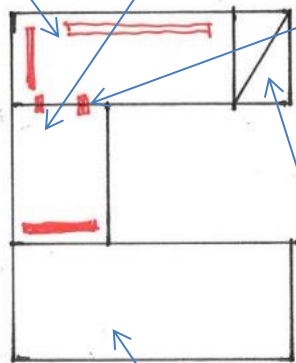
Location: see plan

Unit price:

Extended price:

#### DESCRIPTION:

24" x 72" and 24" x 36" freestanding return with C-leg and stiffeners as shown to support surfaces  
Flat brackets to connect surfaces



work surface supporting file file with lock  
30"x72" adjustable height desk,

**D-5**

Quantity: 1

Location: see plan

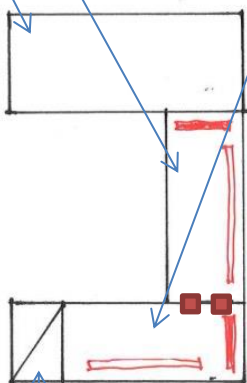
Unit price:

Extended price:

**DESCRIPTION:**

30"x72" adjustable height desk,

24" x 60" and 24" x 72" freestanding return with C-leg and stiffeners as shown to support surfaces



flat brackets to connect surfaces

work surface supporting file file with lock

## WORK STATION

### D-6

Quantity: 1

Location: see plan

Unit price:

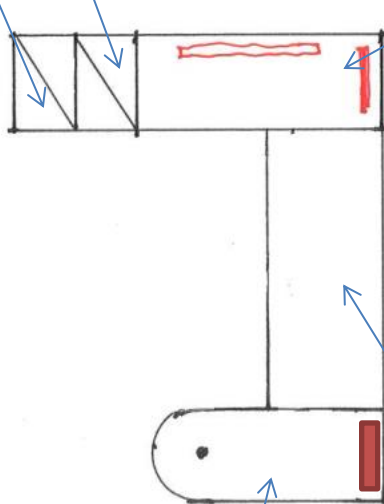
Extended price:

#### DESCRIPTION:

F-6A work surface supporting file file with lock

F-6 box box file

24"x96" return with C-leg and stiffeners as shown to support surfaces



30"x72" adjustable height desk,

24" x 60" peninsula top with c-leg as shown to support surfaces



## FURNITURE SPECIFICATIONS

### WORK STATION

#### D-7 reception

Quantity: 1

Location: see plan

Unit price:

Extended price:

#### DESCRIPTION:

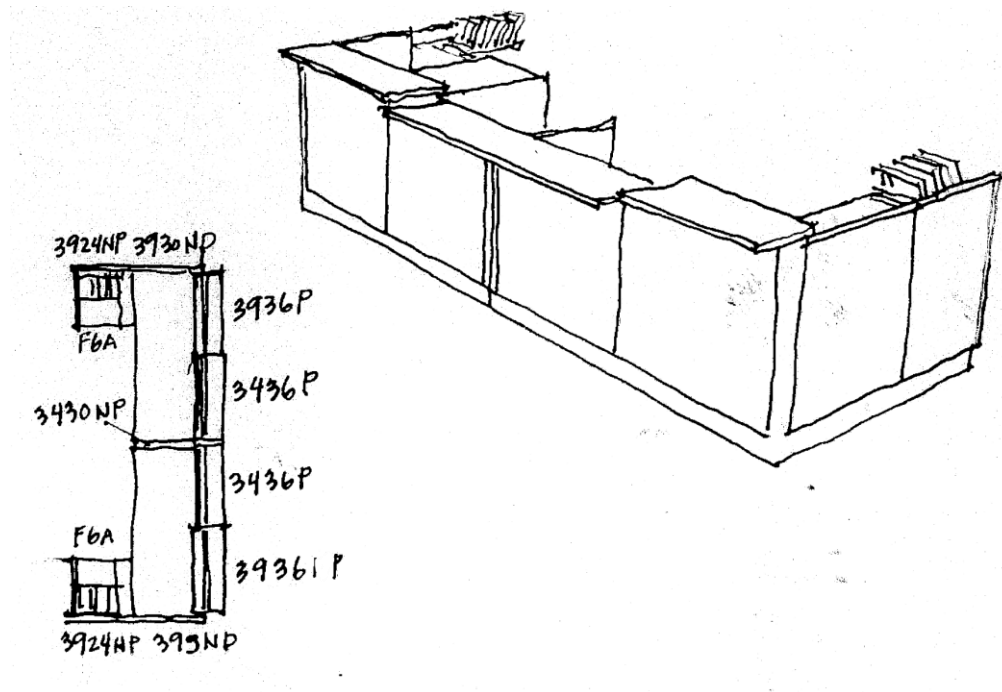
2 - 30"x72" height adjustable tables

2 - lateral file 6-A

2 - 24" tool rail with 2 diagonal trays

3 - Transaction counters - not to interfere with height adjustable surface. 2@ 36" w, 1@ 72"w. Counters to have edge laminate on all sides.

Panels: 2 - 3936P 39" high, 36" wide with power; 2- 3436P 34"h, 36"w with power; 2- 3930NP 39"h, 30"w with power; 1- 3430NP 34"h, 30"w without power; 2- 3924NP



## FURNITURE SPECIFICATIONS

### WORK STATION

#### PANELS

Quantity:

P1	2 - 3924NP
P2	3 - 3930NP
P3	1 - 3936NP
P3A	2 - 3936P
P3B	2 - 3436P
P4	3 - 6724NP
P5	2 - 6724P
P6	3 - 6730NP
P7	2 - 6736P
P8	2 - 6748NP

Location: see plan for location and configuration

Unit price:



Extended price:

MANUFACTURER: Herman Miller Action Office or Architect approved equal

DESCRIPTION: panels

All panels to include structural monolithic panel with fabric covered surfaces, painted top cap, cable management in base and adjustable glides. 1-7/8" panel thickness with 3.25" base. UL listed with Class A fire rating. Where applicable, panels have factory-installed electrical harness distributing double sided, 4-circuit power within cable management raceway. Electrical components are UL listed and CSA Certified. Communication/data port cut-outs included in each base cover. Panels have slotted standards set at 1" increments to connect work surfaces and storage. Panels ship complete – no additional field assembly required. Fabric specified as grade 1. Connection hardware is metal-to-metal and self-leveling.

Stack-on panels to be supplied with all attachment hardware. Attachment hardware will not mar appearance of panels being stacked on.

Specified panels to be 67" inches or 39" as called out on plans