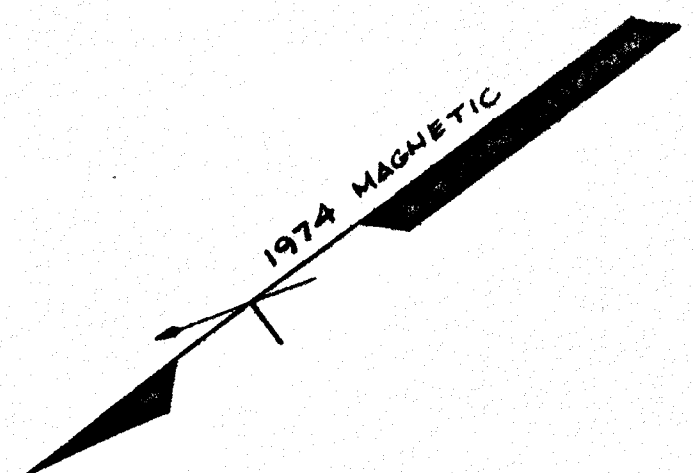
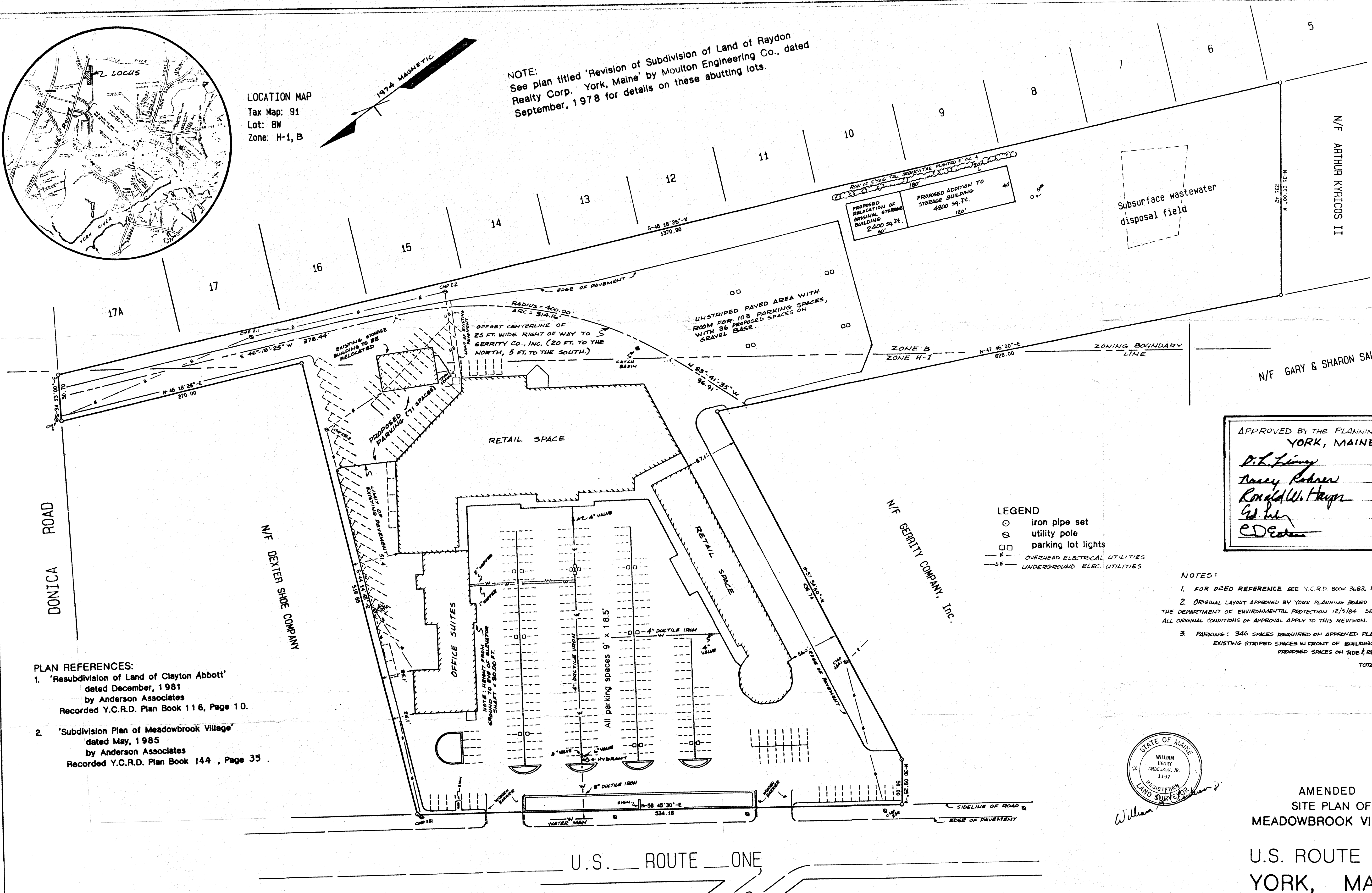


LOCATION MAP
Tax Map: 91
Lot: 8W
Zone: H-1, B



NOTE:
See plan titled 'Revision of Subdivision of Land of Raydon Realty Corp. York, Maine' by Moulton Engineering Co., dated September, 1978 for details on these abutting lots.



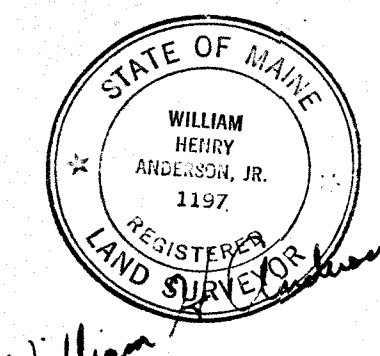
- PLAN REFERENCES:
- 'Resubdivision of Land of Clayton Abbott' dated December, 1981 by Anderson Associates Recorded Y.C.R.D. Plan Book 116, Page 10.
 - 'Subdivision Plan of Meadowbrook Village' dated May, 1985 by Anderson Associates Recorded Y.C.R.D. Plan Book 144, Page 35.

- LEGEND
- iron pipe set
 - ⊙ utility pole
 - parking lot lights
 - E— OVERHEAD ELECTRICAL UTILITIES
 - U— UNDERGROUND ELEC. UTILITIES

- NOTES:
- FOR DEED REFERENCE SEE Y.C.R.D. BOOK 3683, PAGE 324
 - ORIGINAL LAYOUT APPROVED BY YORK PLANNING BOARD 6/6/85 AND APPROVED BY THE DEPARTMENT OF ENVIRONMENTAL PROTECTION 12/5/84 SEE PLAN REFERENCE # 2 ALL ORIGINAL CONDITIONS OF APPROVAL APPLY TO THIS REVISION.
 - PARKING: 346 SPACES REQUIRED ON APPROVED PLAN
EXISTING STRIPED SPACES IN FRONT OF BUILDING: 231
PROPOSED SPACES ON SIDE & REAR: 164
TOTAL 395

APPROVED BY THE PLANNING BOARD OF YORK, MAINE

<i>D.H. King</i>	11-5-87
<i>Nancy Robson</i>	11-5-87
<i>Ronald W. Hays</i>	11-5-87
<i>G. J. ...</i>	11-5-87
<i>E.D. ...</i>	11/5/87

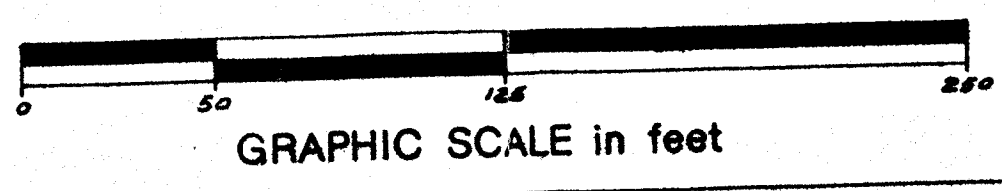


AMENDED
SITE PLAN OF
MEADOWBROOK VILLAGE
U.S. ROUTE ONE
YORK, MAINE
February, 1987 - Scale 1 in. = 50 ft.

OWNER and DEVELOPER:
Meadowbrook Village Associates
Meadowbrook Building
U.S. Route One
York, Maine 03909

CERTIFICATION:
This survey conforms to the Maine Board of Registration for Land Surveyors Standards for a Category 1, Condition 1 boundary survey.

TOTAL AREA OF PARCEL = 10.224 Acres



FILE NO: 4450
PLAN NO: 51 6.8710 01