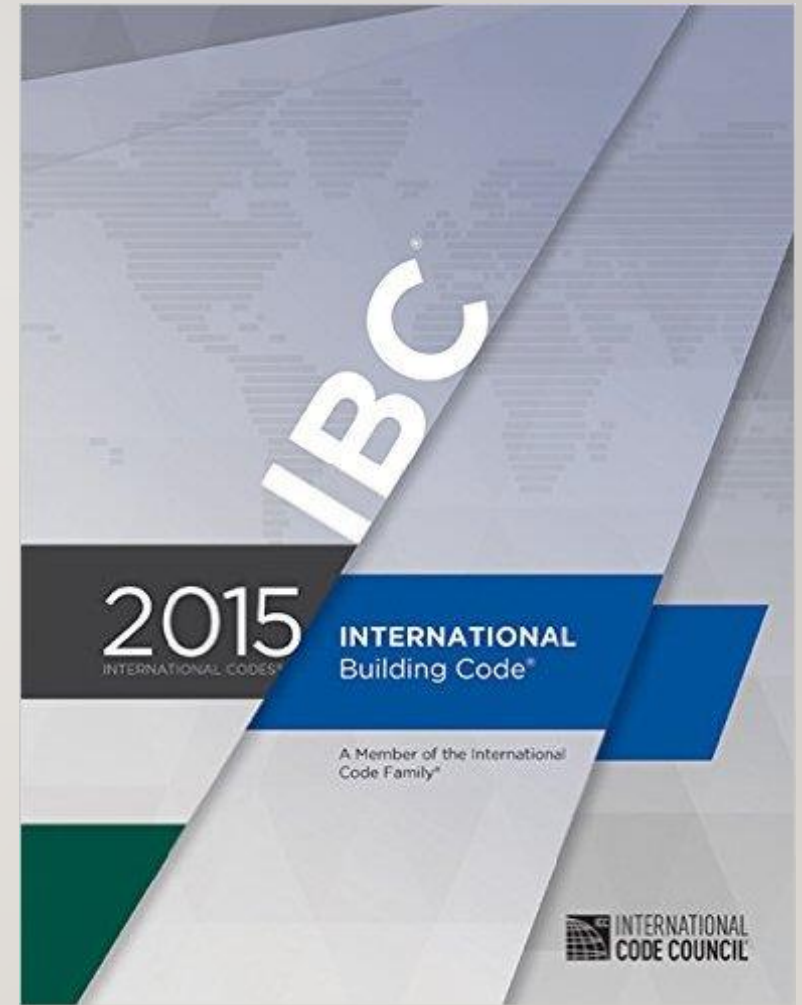
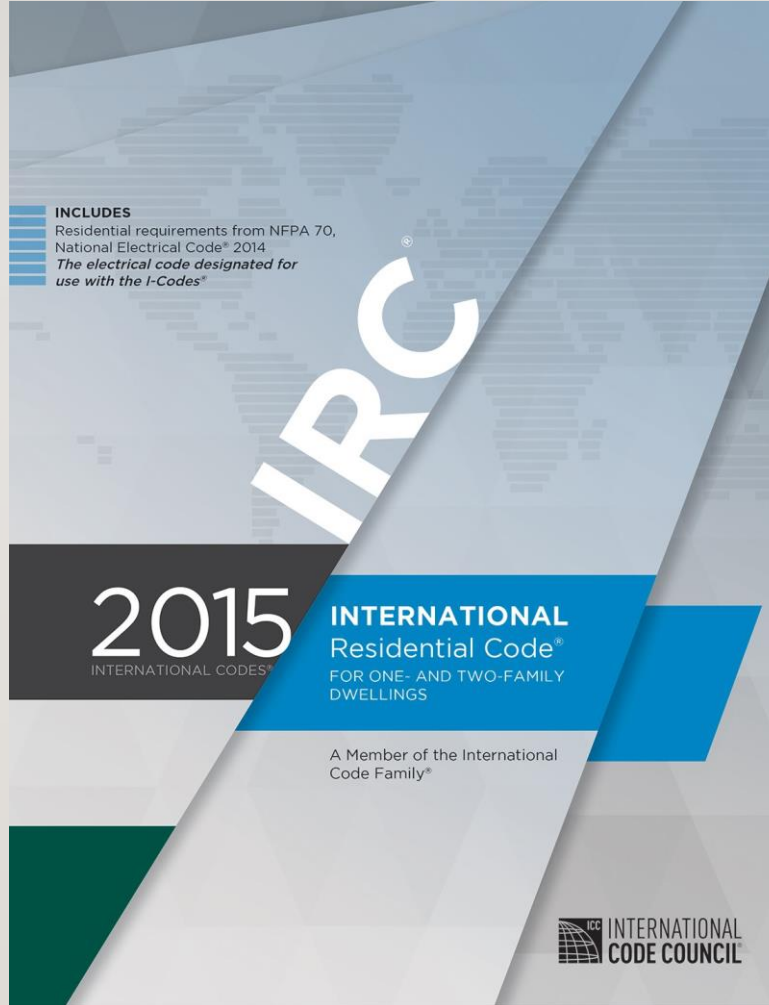


2009 TO 2015 BUILDING CODE CHANGES

YORK CODE ENFORCEMENT
DEPARTMENT



ADOPTION OF THE NEW CODES

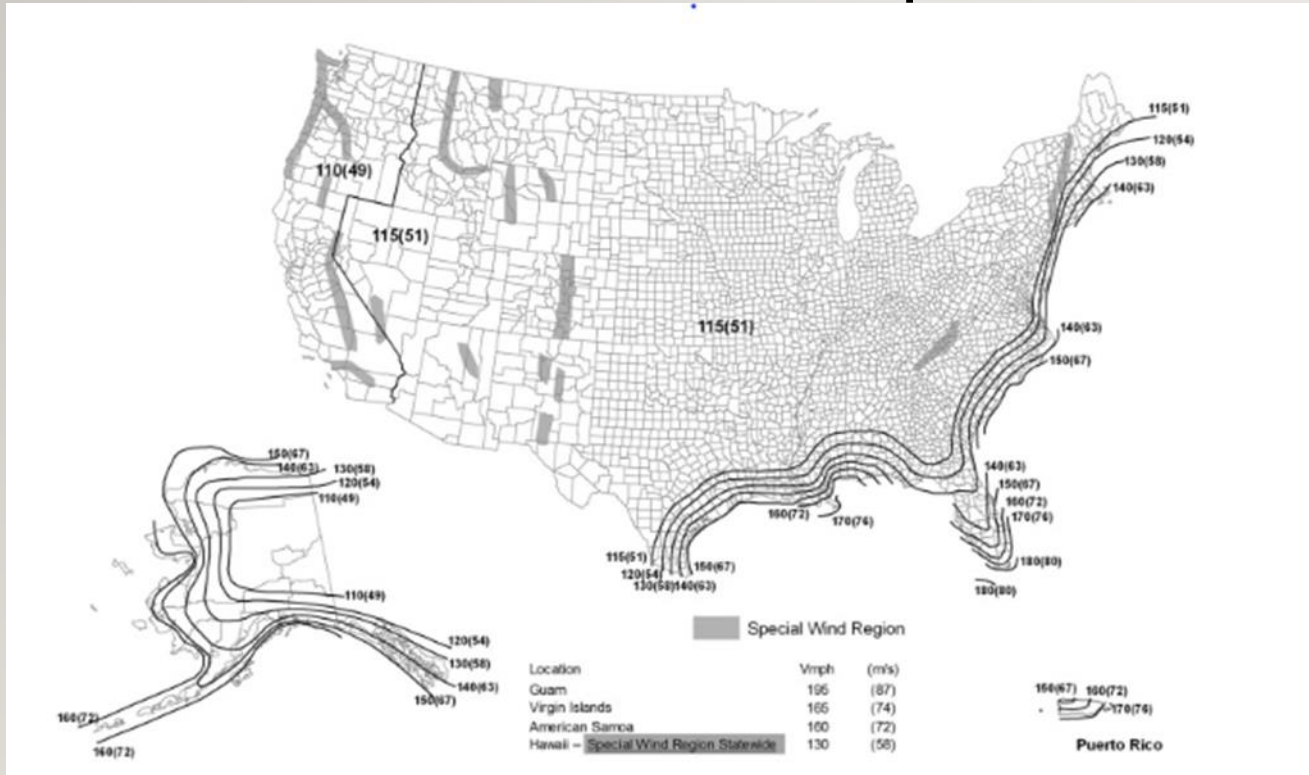
- Adoption by local ordinance includes:
 - 2015 IRC (International Residential Code)
 - 2015 IBC (International Building Code)
 - 2015 IEBC (International Existing Building Code)
 - Adopted by State on January 23rd, 2018
 - Municipal enforcement date of April 23, 2018

CODES NOT
AFFECTED BY
THE CHANGE

- IEEC (International Energy Code) 2009
- NEC (National Electrical Code) 2014
- IAPMO (International Association Plumbing and Mechanical) 2015
- NFPA (National Fire Protection Association) 2015
- Requirements for plumbing, electrical, mechanical, chimneys, energy codes are not changing

CLIMATIC AND GEOGRAPHIC DESIGN CRITERIA (R301)

WIND SPEEDS: 120mph

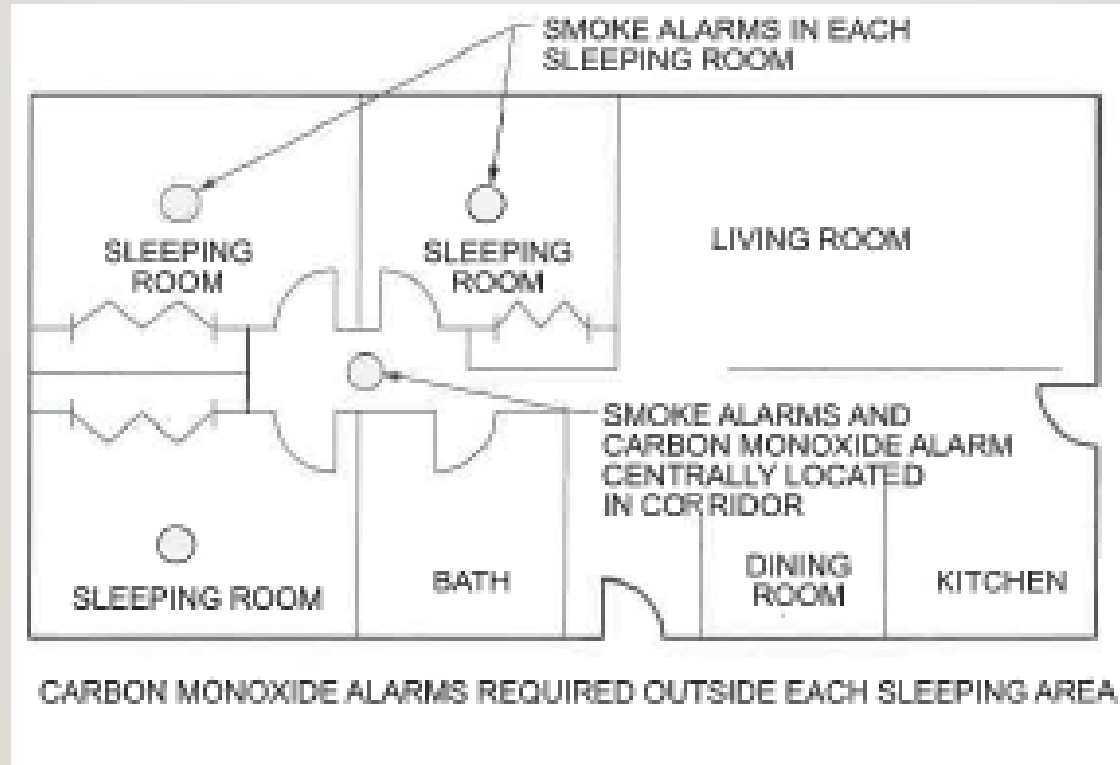


GROUND SNOW LOADS: 50



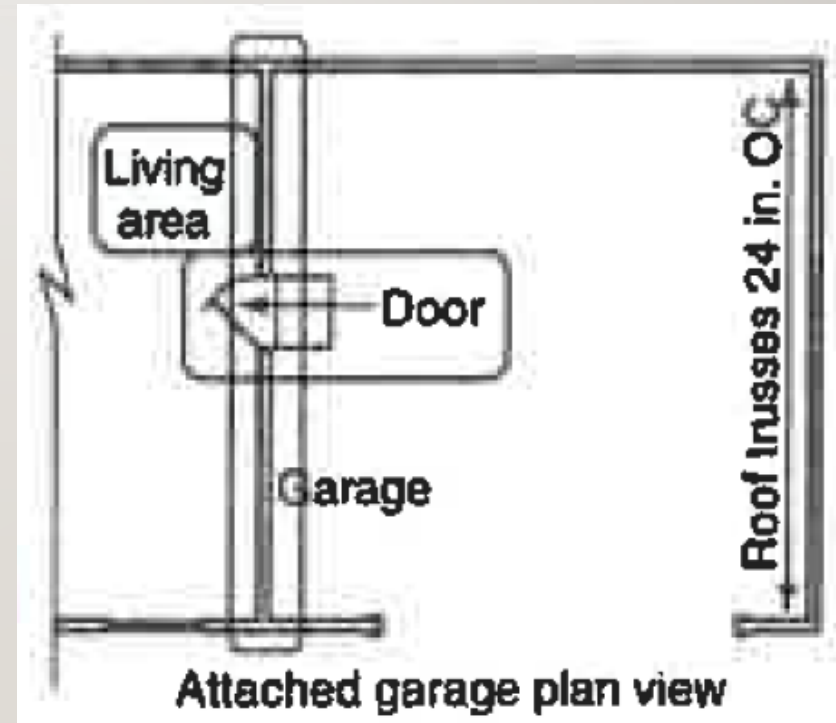
SMOKE/CARBON MONOXIDE ALARMS (R314)

- Alarms must be interconnected and hard wired with battery backup

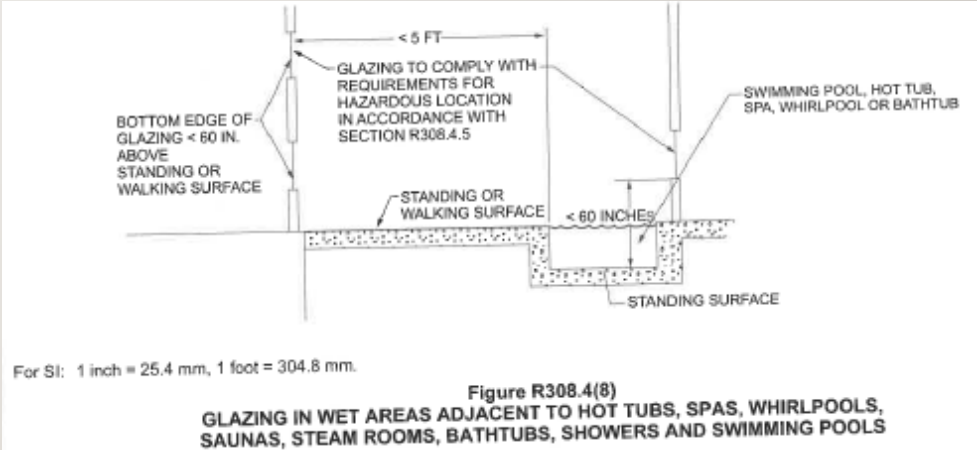
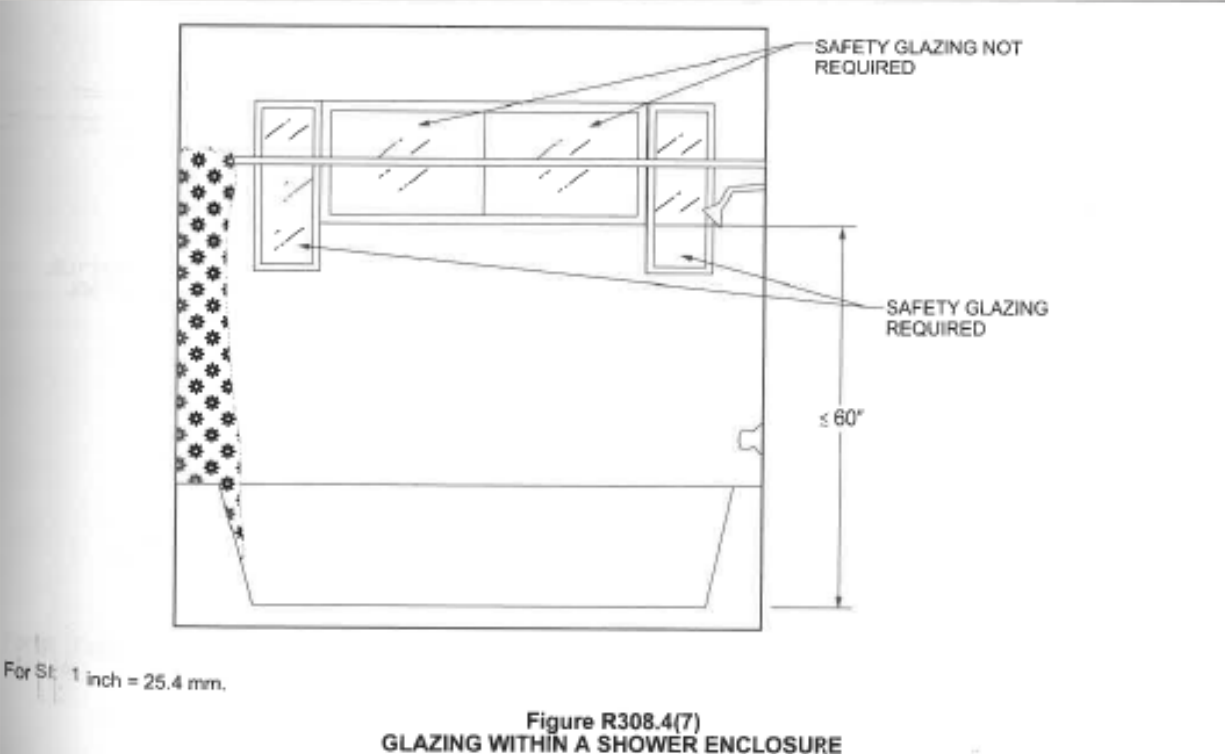


DWELLING SEPARATION FROM GARAGE (R302.6)

- No openings from garage into a sleeping room
- Self-closing door
- 20-minute fire-resistance rated

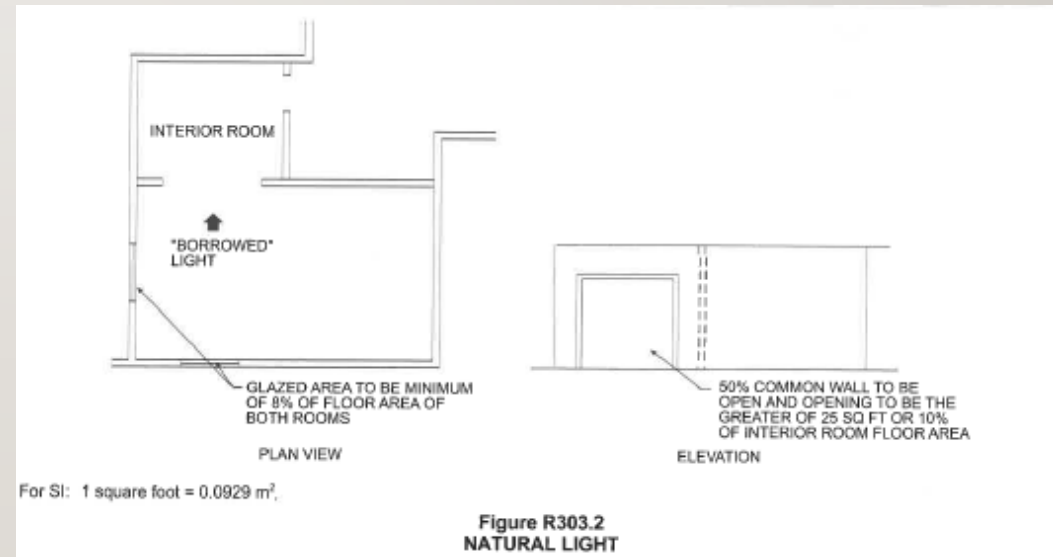


SAFETY GLAZING – WET SURFACES (R308)



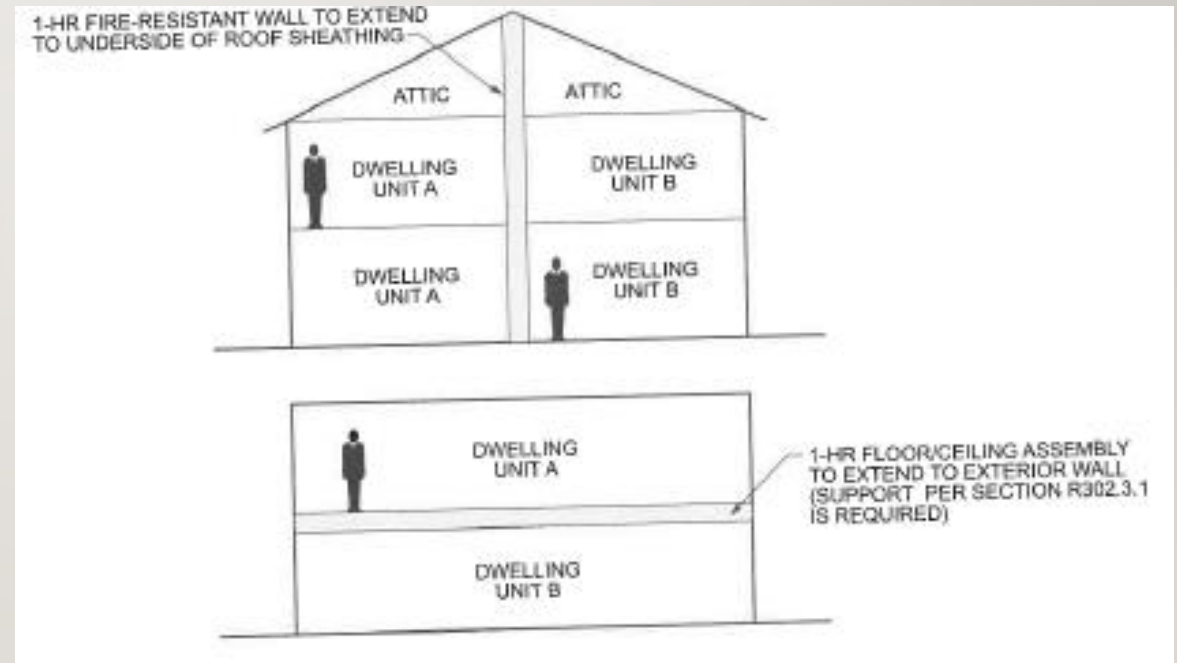
NATURAL LIGHT REQUIREMENTS (R303.1)

- Habitable rooms shall have an aggregate glazing area of not less than 8 percent of the floor area of such rooms.



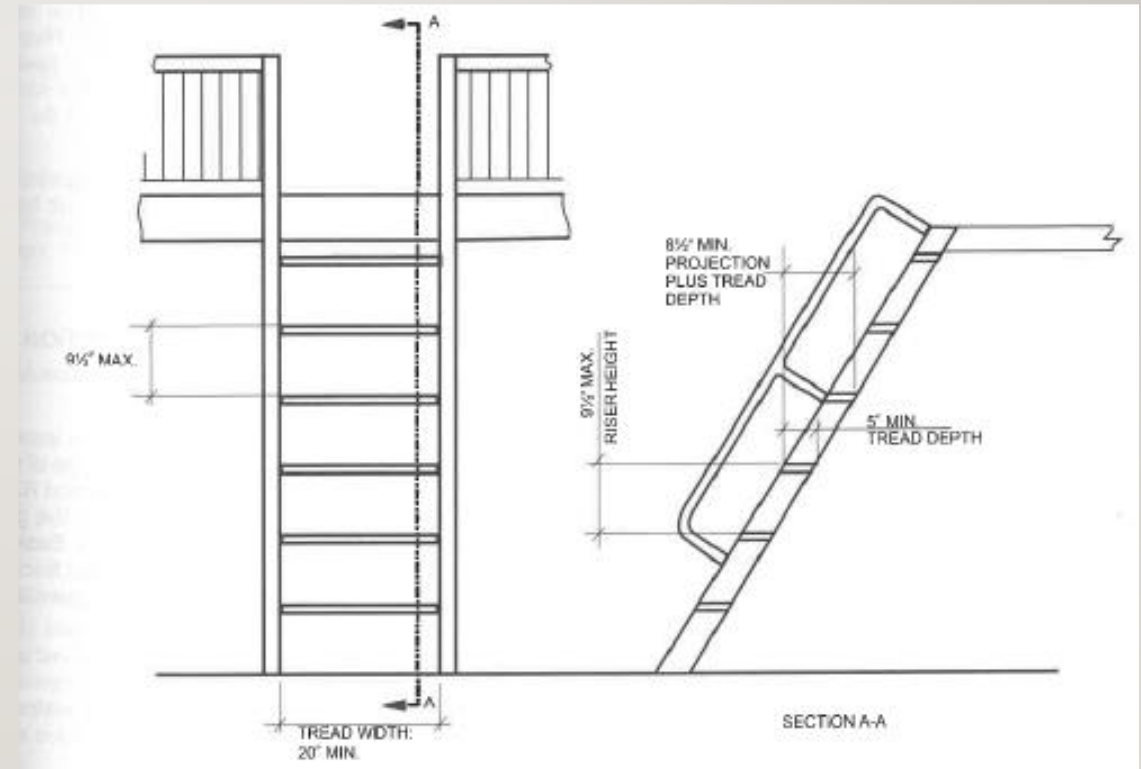
TWO-FAMILY DWELLING SEPARATION (R302.3)

- 1-hour separation
- Continuous foundation to roof
- Applies to Accessory Dwelling Units (ADUs)



SHIP'S LADDERS (R311.7.12)

- Ship's ladders shall be permitted provided that a required means of egress stairway serves the same space at each adjoining level or where a means of egress is not required.
- Width of not less than 20 inches.



ENERGY CERTIFICATE (MANDATORY)

- Permanent certificate posted near furnace or approved indoor location
- Completed by Builder or Registered design professional
- Listing of insulation, fenestration, efficiency of equipment, results of air testing

Energy Efficiency Certificate			
Insulation Rating		R-Value	
Ceiling/roof Walls	Frame		
	Mass		
	Basement		
	Crawl space		
Floors	Over unconditioned space		
	Slab edge		
Ducts	Outside conditioned spaces		
Glass and Door Rating	NFRC U-Factor	NFRC SHGC	
Window			
Opaque door			
Skylight			
Heating and Cooling Equipment		Type	Efficiency
Heating system		AFUE	
Cooling system		SEER	
Water heater		EF	
Indicate if the following have been installed (an efficiency shall not be listed):			
<input type="checkbox"/> electric furnace	<input type="checkbox"/> gas-fired unvented room heater	<input type="checkbox"/> baseboard electric heater	
Designer _____			
Builder _____			
Date _____			

2015 IRC/IBC TRANSITION GUIDEBOOKS

